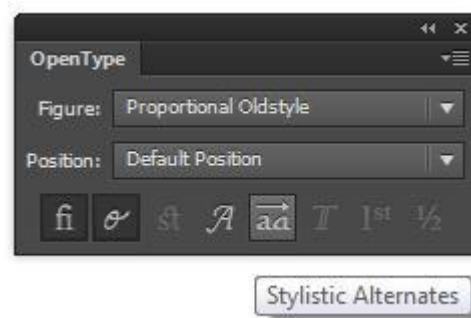


# How to?

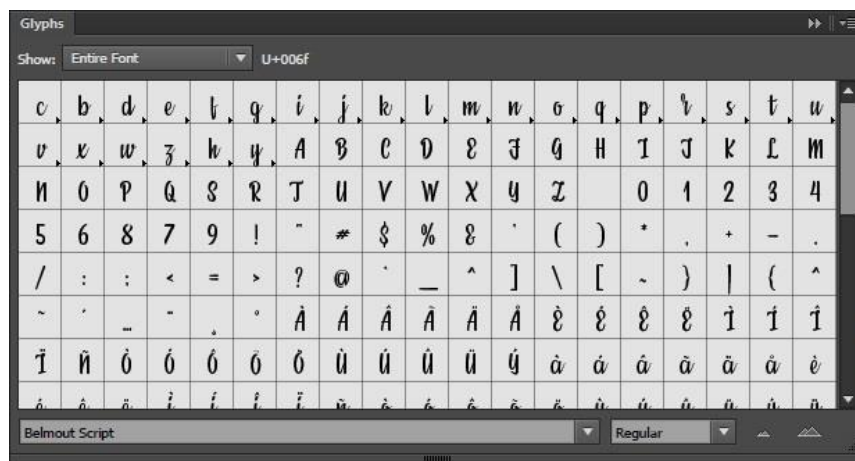
## Access OpenType features in Adobe Illustrator and Adobe InDesign

Go to Window > Type > OpenType (Alt+Shift+Ctrl+T). In the OpenType panel, simply click on the button to activate the OpenType feature that you like.



## Access all alternate characters in Adobe Illustrator and Adobe InDesign

Go to Window > Type > Glyphs . The default on the 'Show' dropdown list bar should be 'Entire Font', you can change it to every features that you like. You can also select a character on the font and then change the Show list to 'Alternates for Current Selection' to access alternate characters that available for that character.



## That's it!

Feel free to let me know if you need any extra help, always happy to assist!