

Heartland Font

Here is small instruction for using
stylistic alternates

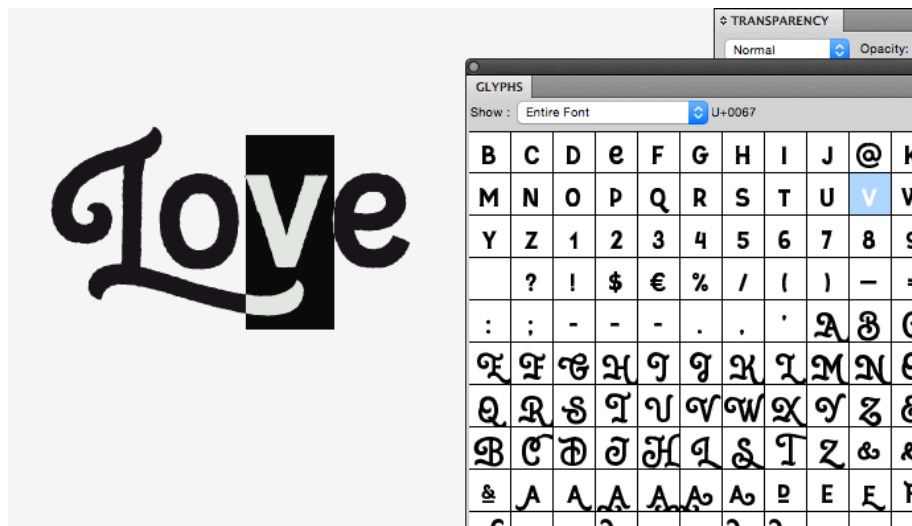
For using variations of uppercase or lowercase letters in Heartland Font you just need to push special combinations:

a.2, a.3, a.4, d.2, l.2 etc.

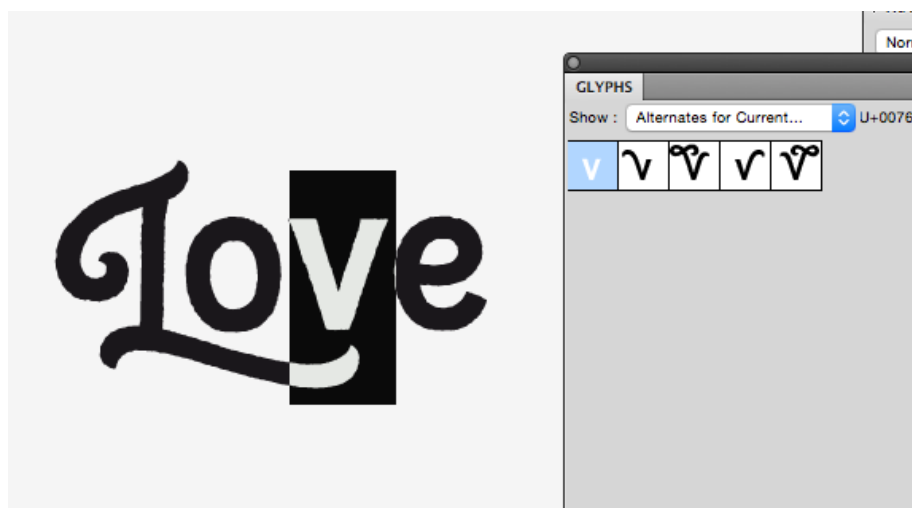
A.2, B.2, C.2 D.2 etc.

This way preferred for Adobe illustrator and Photoshop

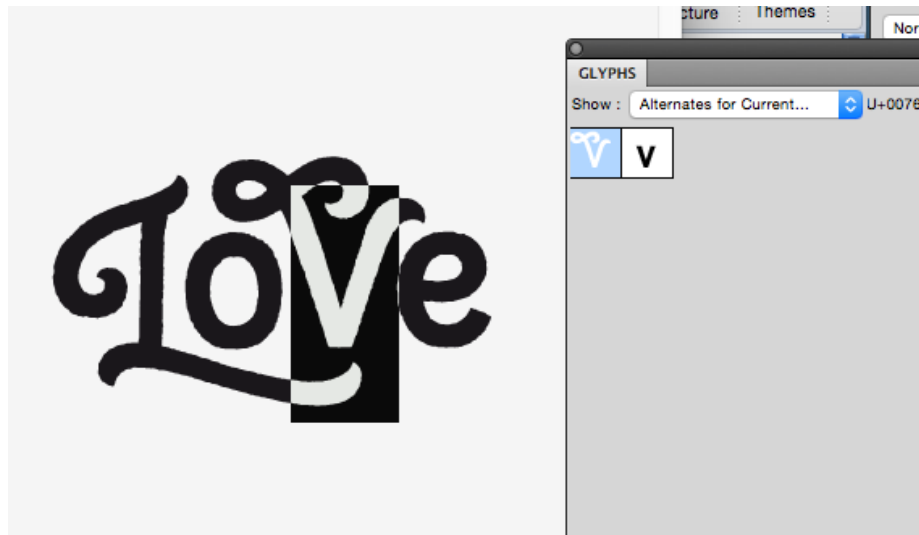
or in Adobe Illustrator go to Type menu and click Glyphs. After you will see window with characters.



In top of this window you need choose «Alternates for Current selection» in drop-down menu (v – current selection on my example).



Then double-click on any available alternates...



If you need to see alternates for current selection again just make double-click on original character in white square.

For me the first way is more comfortable. But you can choose what you like.
Good luck!

*For any questions about using this font please write me on Creative Market
or my personal mail: mail@andreysharonov.com*