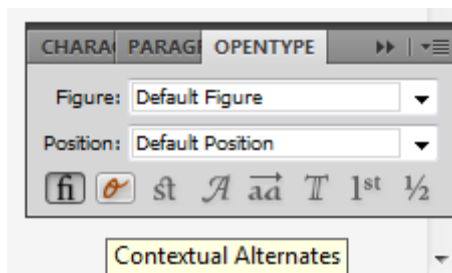




1.

Access OpenType features in Adobe Illustrator and Adobe InDesign

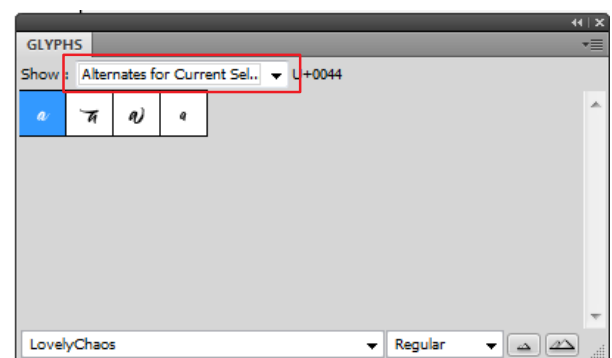
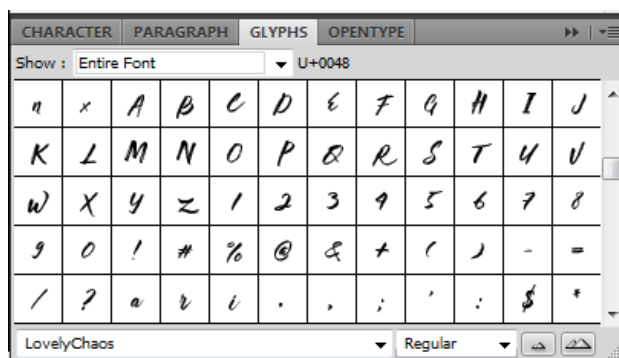
Go to Window > Type > OpenType (Alt+Shift+Ctrl+T). In the OpenType panel, simply click on the button to activate the OpenType feature that you like.



2.

Access all alternate characters in Adobe Illustrator and Adobe InDesign

Go to Window > Type > Glyphs. The default on the 'Show' dropdown list bar should be 'Entire Font', you can change it to every features that you like. You can also select a character on the font and then change the Show list to 'Alternates for Current Selection' to access alternate characters that available for that character.



As simple as that!

If you need help, don't hesitate to contact me on email,
always happy to assist!