

The Legend Script

instruction for using stylistic alternates and swashes

For using alternates of uppercase, lowercase or numbers in Legend Script you just need to push special combinations.

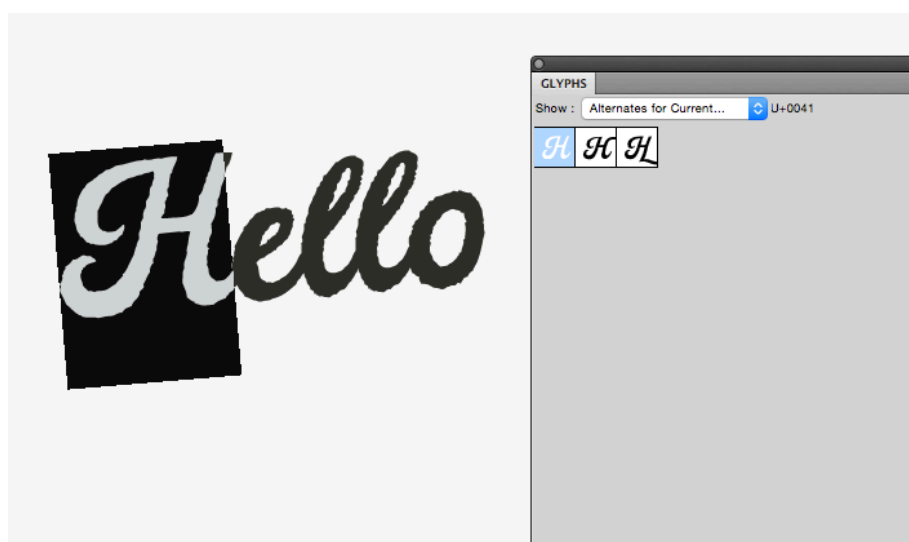
For example: A.2, B.2, B.3, C.2, b.2 d.2 &.2 2.2 2.3 etc.

Alternates for lowercase characters with protruding elements like b, d, f, g, h etc (helps to arrange words in two lines more compactly).

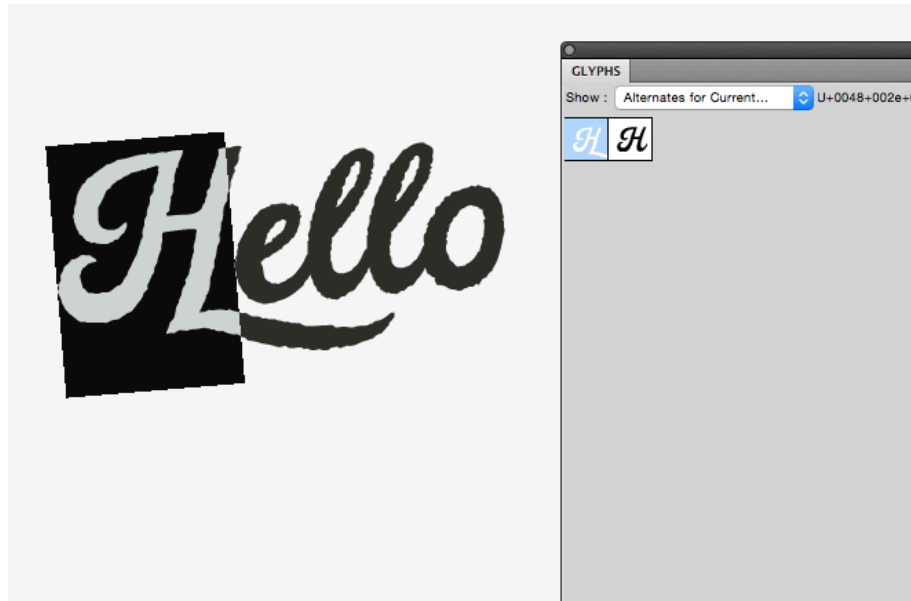
or in Adobe Illustrator go to Type menu and click Glyphs. After you will see window with characters.



In top of this window you need choose «Alternates for Current selection» in drop-down menu (v – current selection on my example).



Then double-click on any available alternates...



If you need to see alternates for current selection again just make double-click on original character in white square.

For me the first way is more comfortable. But you can choose what you like.

For using end-swashes in Legend Script you just need to add in the end of the word:

_1 (underscore + one)

_2 (underscore + two)

and so on...up to _12



Good luck!

*For any questions about using this font please write me on Creative Market
or my personal mail: mail@andreysharonov.com*